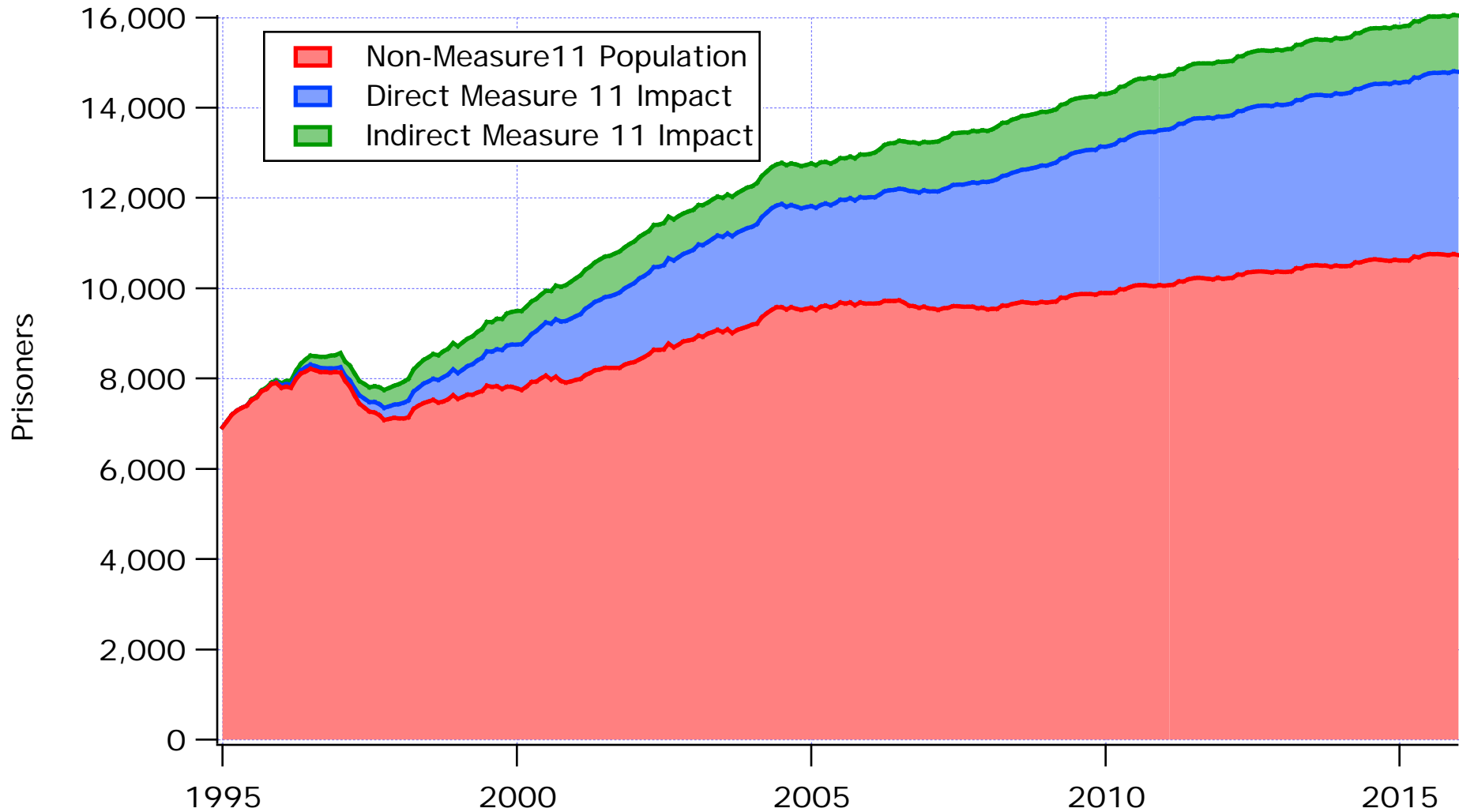


Oregon Prison Population and Measure 11 Impact



Source: Oregon Department of Administrative Services, Office of Economic Analysis October, May 2006 Data

Measure 11 Impact: 1994 Estimate: 6085 by 2000; July 2001 Actual: 2589;
January 2006 Forecast: 3314; January 2016 Forecast: 5306

Measure 11 accounts for 54.7 percent of the prison increase from April 1995 to January 2006 and 65 percent of the forecasted increase from January 2006 to January 2016.

From April 2005 to April 2006, the forecast for total prison population as of 1/1/2015 decreased by 1411 beds while the total forecast for Measure 11 impact decreased by 655.