

1. Source: Bureau of Justice Statistics (<http://bjsdata.ojp.usdoj.gov/dataonline/Search/Crime/State/StatebyState.cfm>)
2. Violent index crimes are robbery, aggravated assault, forcible rape, and non-negligent homicide.
3. From 1960 through 1985, one new prison with 400 beds was built while Oregon's violent crime rate rose 7.9 times.
4. From 1995 through 2002, Oregon's violent crime rate dropped 44% while the national rate dropped 28%.
5. In 1994, Oregon ranked 42nd among states in incarceration rate. In 2003 Oregon ranked 30th.
6. 40 beds were added as South Fork and 100 at Powder River in 2003. 100 were added at Shutter Creek in 2004.

Measure 11 Crimes and Sentences

| Crime | Sentence | Exceptions |
|--|-------------------------------|------------|
| Arson I | 7 years, 6 months | SB 1049 |
| Assault I | 7 years, 6 months | |
| Assault II | 5 years, 10 months | SB 1049 |
| Attempted Aggravated Murder | 10 years | |
| Attempted Murder | 7 years, 5 months | |
| Compelling Prostitution | 5 years, 10 months | |
| Conspiracy To Commit Aggravated Murder | 10 years | |
| Conspiracy To Commit Murder | 7 years, 5 months | |
| Kidnapping I | 7 years, 6 months or 25 years | |
| Kidnapping II | 5 years, 10 months | SB 1049 |
| Manslaughter I | 10 years | |
| Manslaughter II | 6 years, 3 months | HB 2494 |
| Murder | 25 years | |
| Rape I | 8 years, 4 months or 25 years | |
| Rape II | 6 years, 3 months | HB 2379 |
| Robbery I | 7 years, 6 months | |
| Robbery II | 5 years, 10 months | SB 1049 |
| Sexual Abuse I | 6 years, 3 months | HB 2379 |
| Sodomy I | 8 years, 4 months or 25 years | |
| Sodomy II | 6 years, 3 months | HB 2379 |
| Unlawful Sexual Penetration I | 8 years, 4 months or 25 years | |
| Unlawful Sexual Penetration II | 6 years, 3 months | HB 2379 |
| Using a Child in a Display of Sexually Explicit Material | 5 years, 10 months | |

Arson is a Measure 11 crime only when the offense represented a threat of serious physical injury.

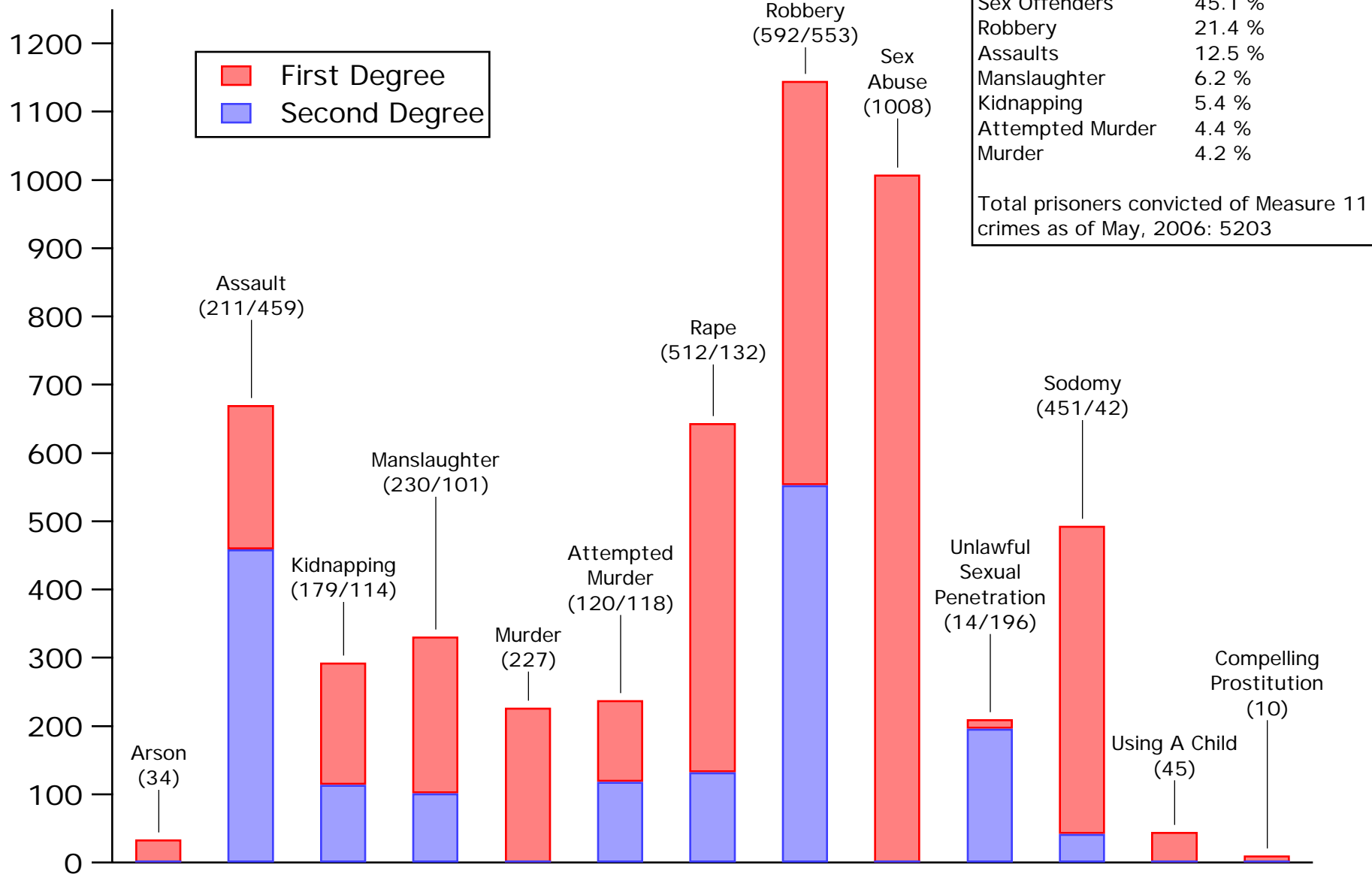
SB 1049: Passed in 1997. Allows judges to make exceptions in Assault II, Kidnapping II and Robbery II cases when offender had no prior serious felony convictions. See ORS 137.712 for details.

HB 2494: Passed in 1999. Provides exemption for Manslaughter II when the victim is a sick or injured child being treated solely by spiritual means.

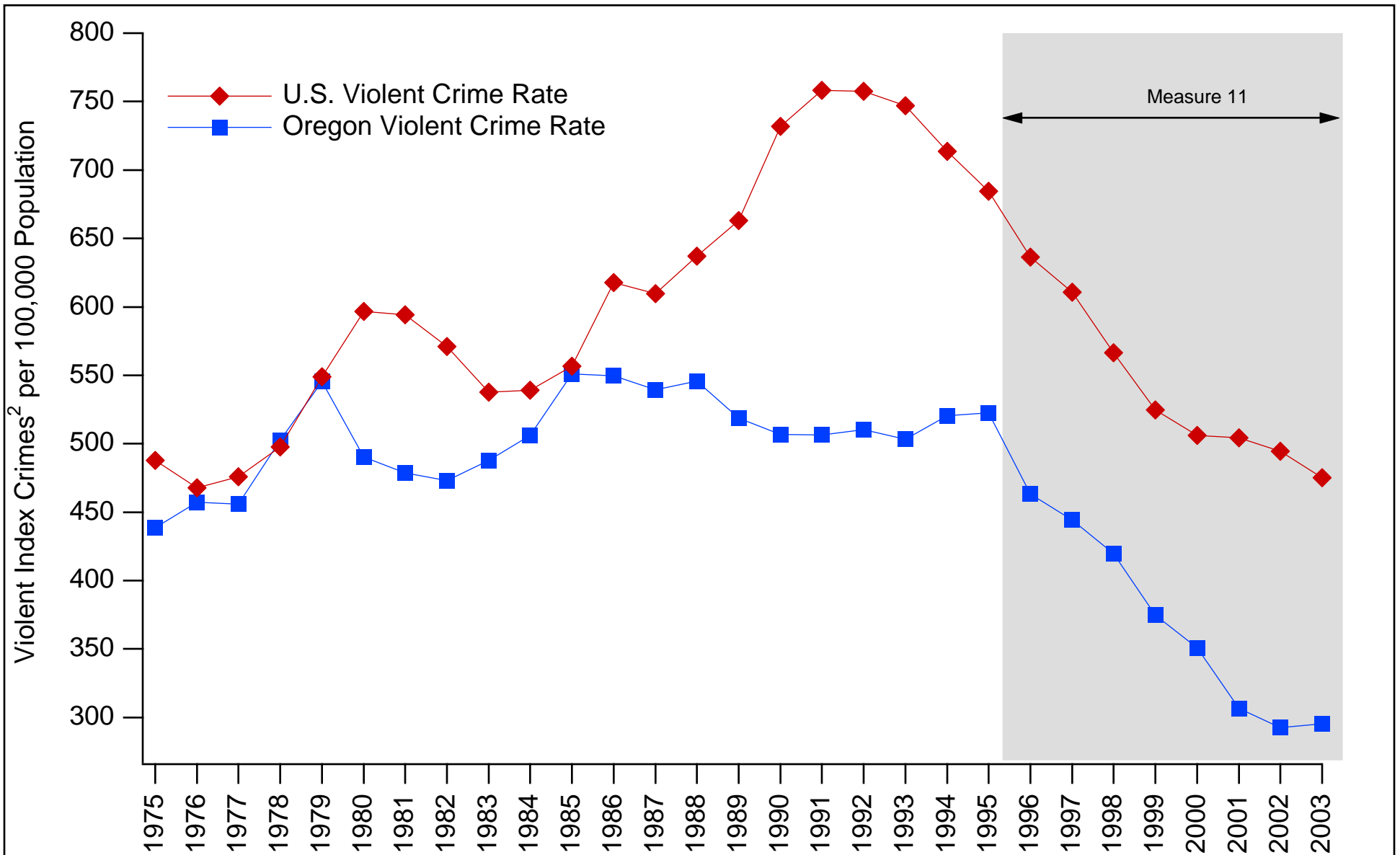
HB 2379: Passed in 2001. Allows judges to make exceptions for offenders without prior serious felony convictions when the offender is within 5 years of age of the victim, the victim was at least 12 years of age and the victim's lack of consent was due solely to the victim's age.

HB 3511: Passed in 2006. "Jessica's Law For Oregon" provides for 25 year sentence for sex crimes against a child under 12 or Kidnapping I in the furtherance of sex crimes against a child under 12.

Prisoners Convicted of Measure 11 Crimes - May, 2006



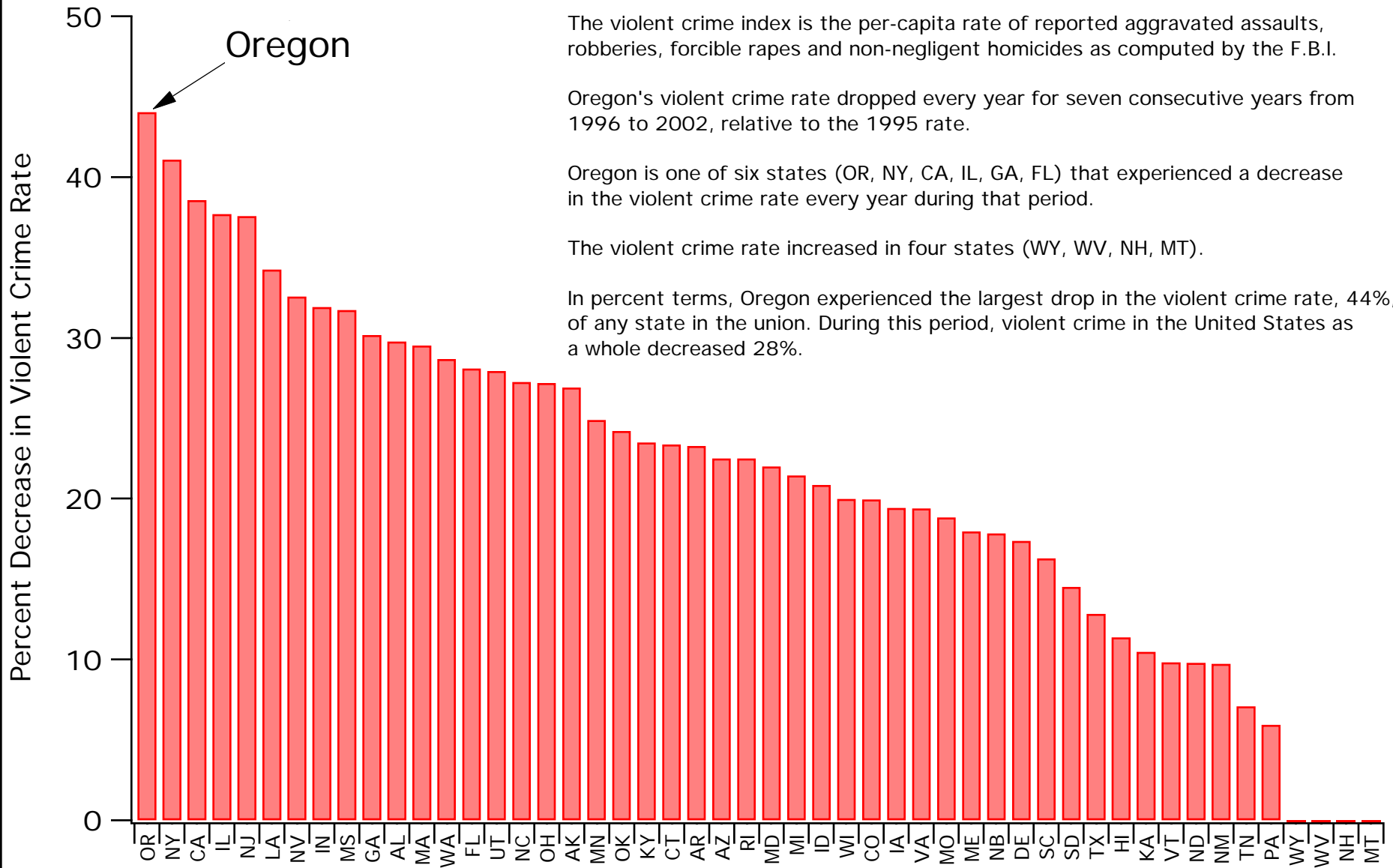
Source: Oregon Department of Corrections



1. Source: Bureau of Justice Statistics (<http://bjsdata.ojp.usdoj.gov/dataonline/Search/Crime/State/StatebyState.cfm>)

2. Violent index crimes are robbery, aggravated assault, forcible rape, manslaughter and murder.

Percent Decrease in Violent Crime Rate, 1995 Through 2002



The violent crime index is the per-capita rate of reported aggravated assaults, robberies, forcible rapes and non-negligent homicides as computed by the F.B.I.

Oregon's violent crime rate dropped every year for seven consecutive years from 1996 to 2002, relative to the 1995 rate.

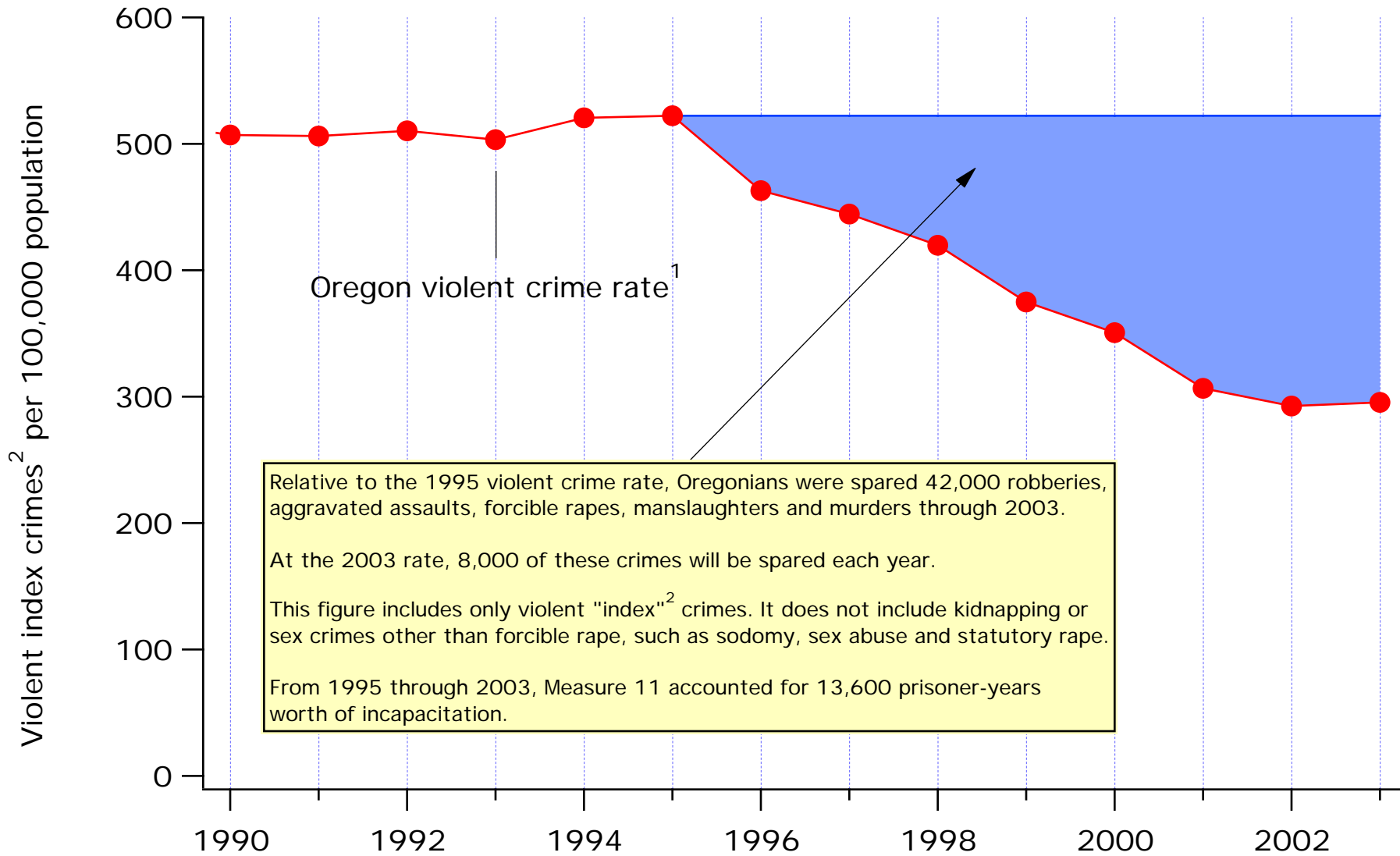
Oregon is one of six states (OR, NY, CA, IL, GA, FL) that experienced a decrease in the violent crime rate every year during that period.

The violent crime rate increased in four states (WY, WV, NH, MT).

In percent terms, Oregon experienced the largest drop in the violent crime rate, 44%, of any state in the union. During this period, violent crime in the United States as a whole decreased 28%.

Sources: Bureau of Justice Statistics (<http://www.ojp.usdoj.gov/bjs>)
F.B.I. (http://www.fbi.gov/ucr/cius_02/xl/02tbl05.xls)

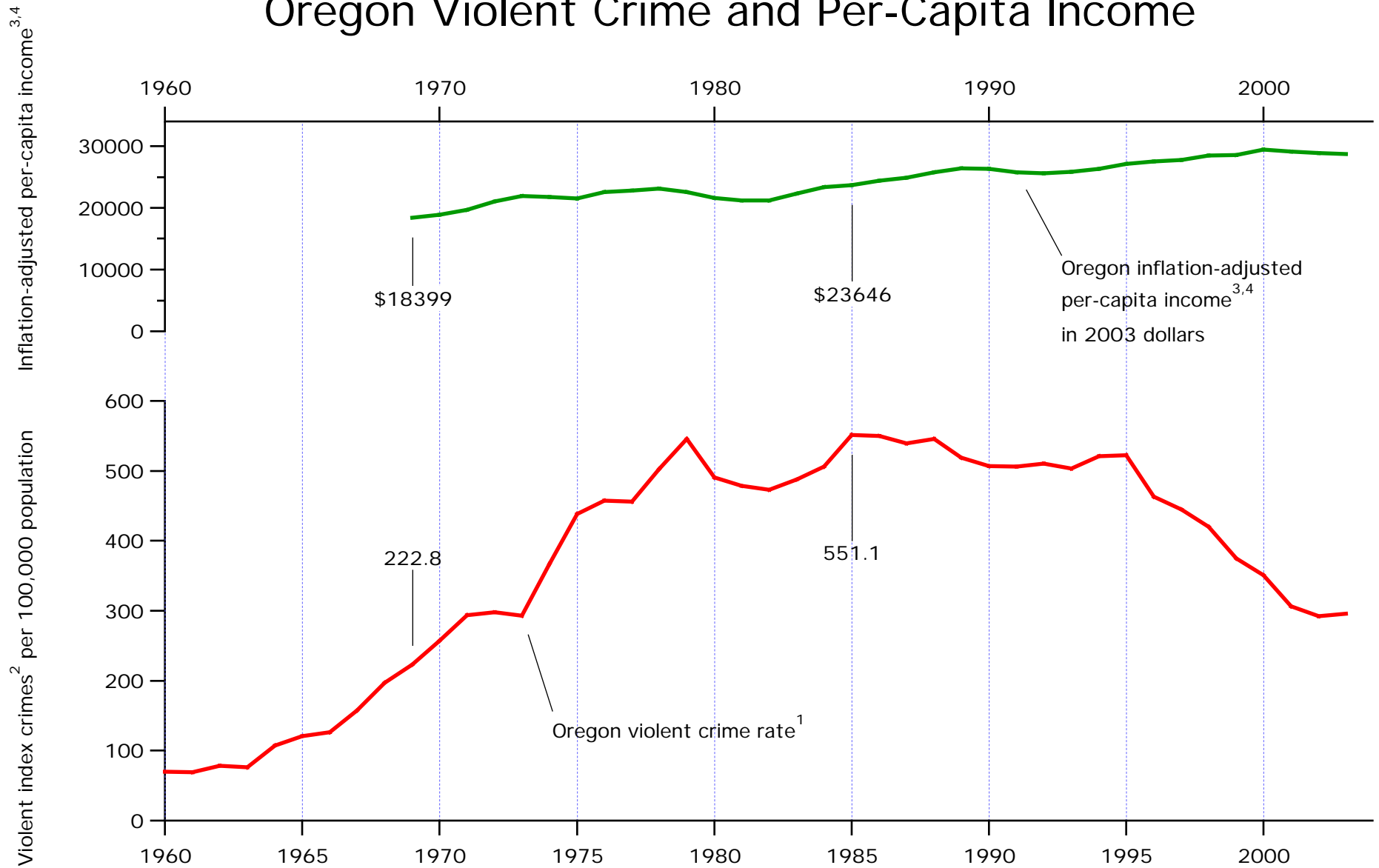
Oregon Violent Crime Savings Relative to 1995



1. Source: Bureau of Justice Statistics (<http://bjsdata.ojp.usdoj.gov/dataonline/Search/Crime/State/StatebyState.cfm>)

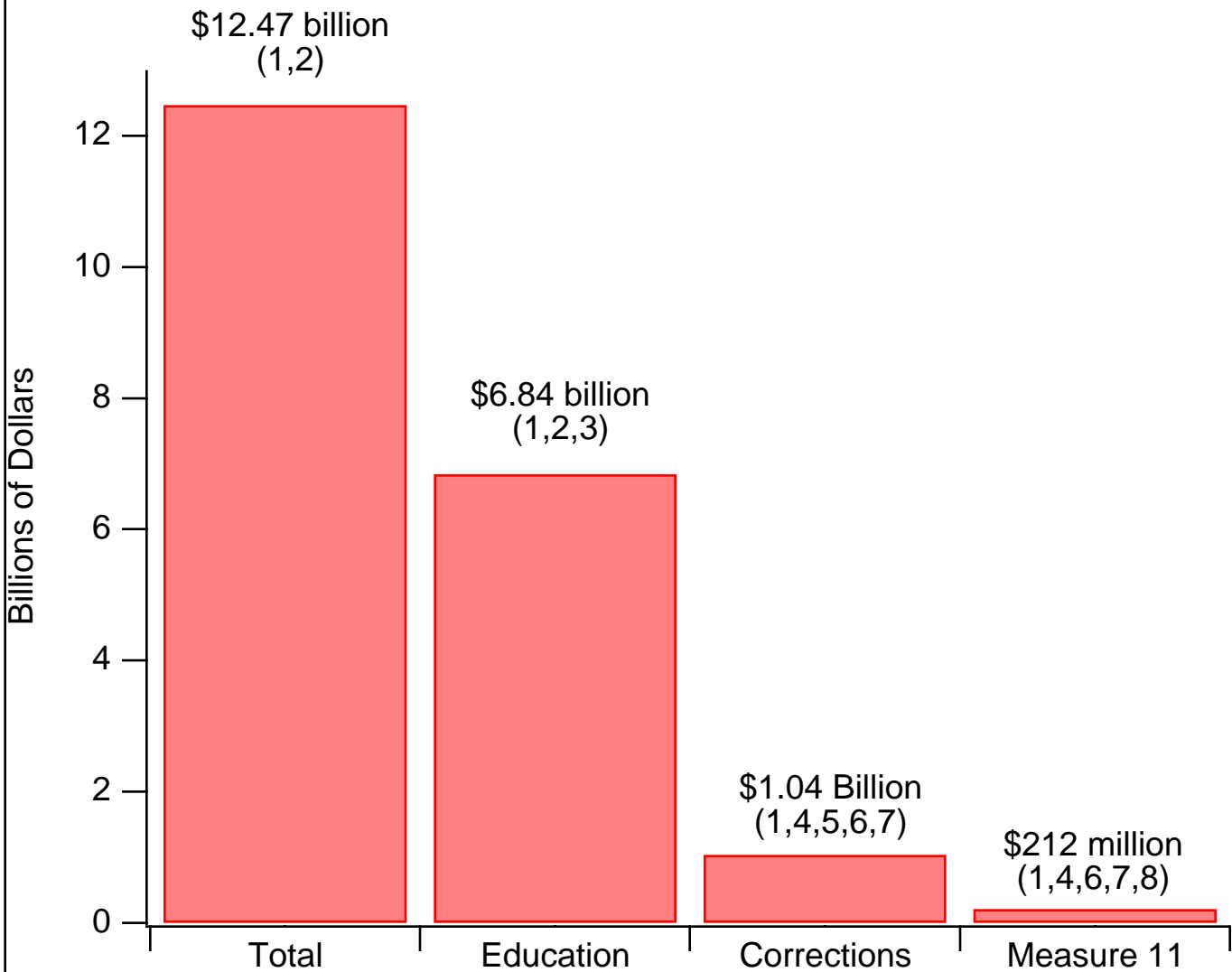
2. Violent index crimes are robbery, aggravated assault, forcible rape, manslaughter and murder.

Oregon Violent Crime and Per-Capita Income



1. Source: Bureau of Justice Statistics (<http://bjsdata.ojp.usdoj.gov/dataonline/Search/Crime/State/StatebyState.cfm>)
2. Violent index crimes are robbery, aggravated assault, forcible rape, and non-negligent homicide.
3. Source: US Department of Commerce, Bureau of Economic Analysis (<http://www.bea.gov/bean/regional/reis>)
4. Inflation adjustment based on Portland Oregon consumer price index, US Department of Labor, Bureau of Labor Statistics (<http://data.bls.gov/PDQ/outside.jsp?survey=cu>)

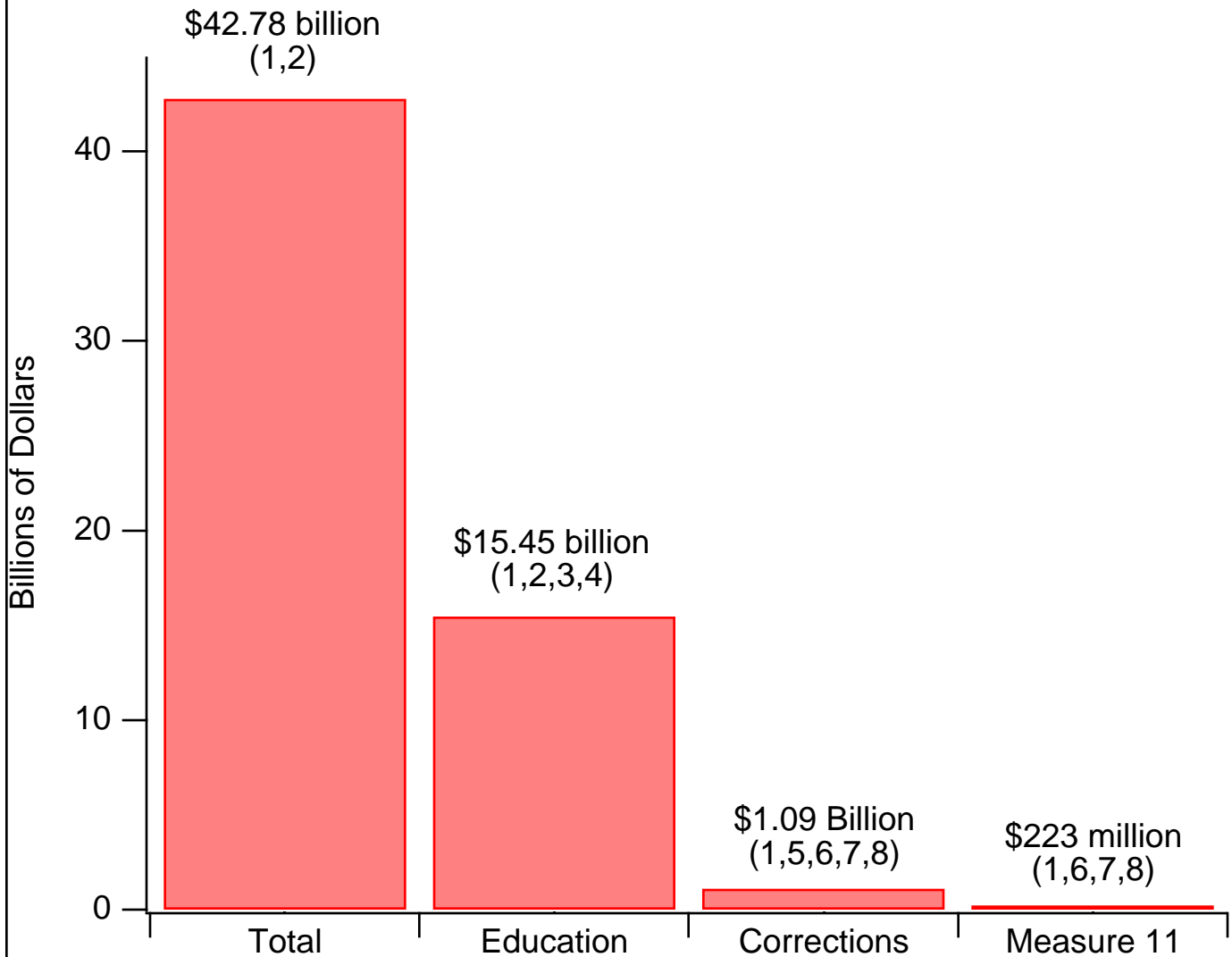
Oregon General+Lottery Fund Spending 2005-2007



Notes

1. Source: Legislative Fiscal Office.
2. Includes general and lottery funds only.
3. Includes K-12, community colleges, higher ed, student assistance, OHSU.
4. Includes general fund only.
5. Includes community corrections (\$191 million) and debt service for jail construction (\$16 million).
6. Includes debt service for prison construction (\$100 million).
7. Includes health care (\$112 million), education, treatment, religious services (\$44 million).
8. Total corrections budget includes Measure 11 cost.

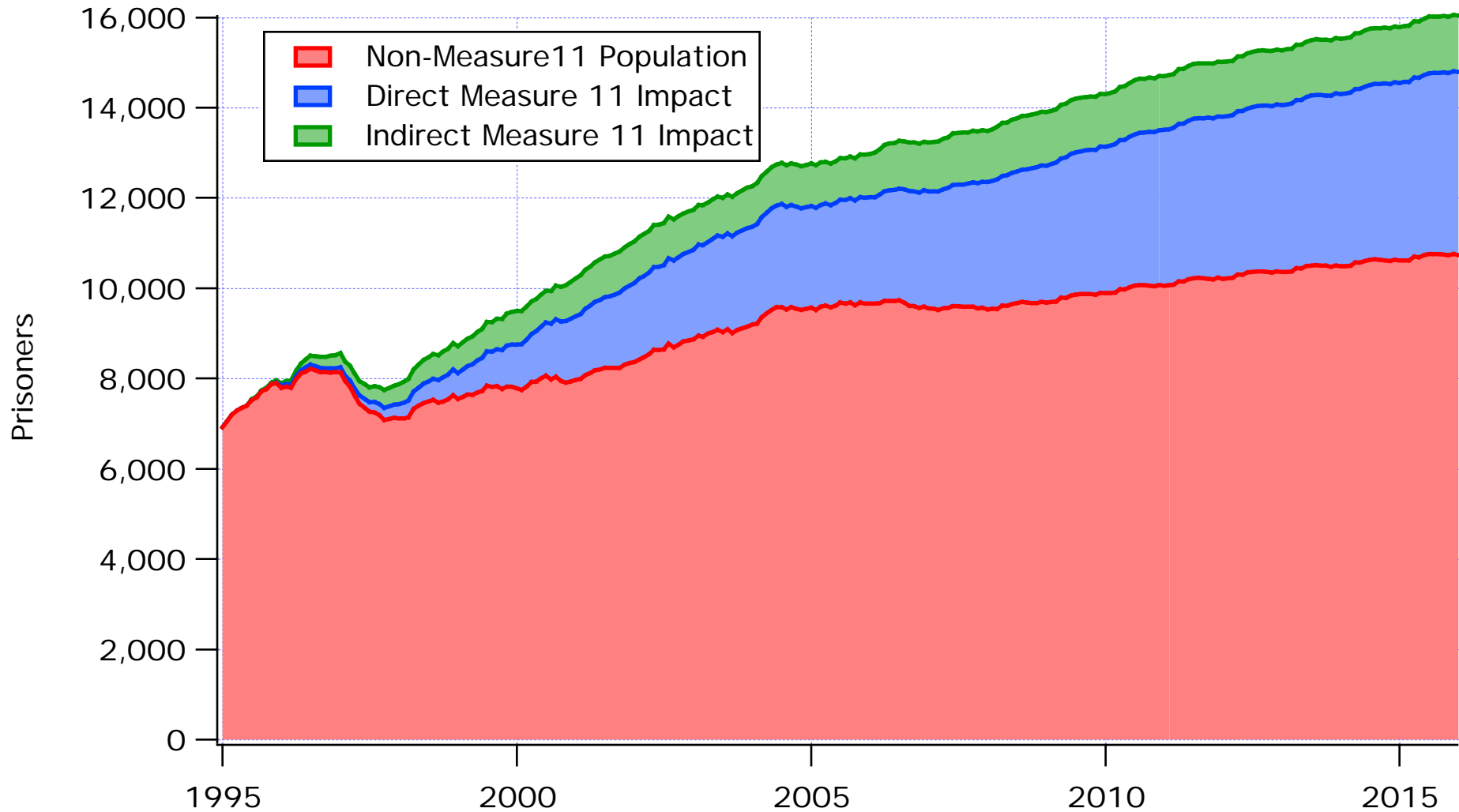
Spending From All Sources 2005-2007



Notes

1. Source: Legislative Fiscal Office.
2. Includes general, lottery, other, federal funds.
3. Includes property taxes (\$3.32 billion) and revenue from tuition and fees (about \$1 billion).
4. Includes K-12, community colleges, higher ed, student assistance, OHSU.
5. Includes community corrections (\$191 million) and debt service for jail construction (\$16 million).
6. Includes debt service for prison construction (\$100 million).
7. Includes health care (\$112 million), education, treatment, religious services (\$44 million).
8. Total corrections budget includes Measure 11 cost.

Oregon Prison Population and Measure 11 Impact



Source: Oregon Department of Administrative Services, Office of Economic Analysis October, May 2006 Data

Measure 11 Impact: 1994 Estimate: 6085 by 2000; July 2001 Actual: 2589;
 January 2006 Forecast: 3314; January 2016 Forecast: 5306

Measure 11 accounts for 54.7 percent of the prison increase from April 1995 to January 2006 and 65 percent of the forecasted increase from January 2006 to January 2016.

From April 2005 to April 2006, the forecast for total prison population as of 1/1/2015 decreased by 1411 beds while the total forecast for Measure 11 impact decreased by 655.